

Gammes La m et Do M

♩ = 60

La mineur

Case V VII VIII X XII XIII XV XVII XV XIII XII X VIII VII V



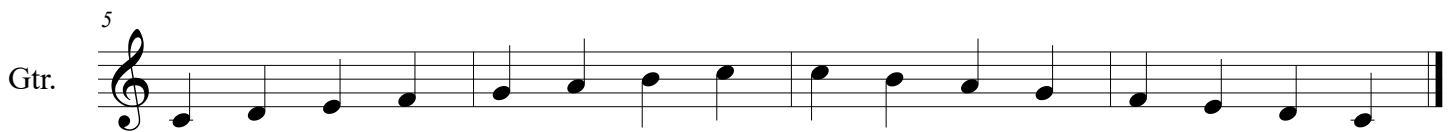
Main gauche 1 3 4 1 3 4 1 3 1 4 3 1 4 3 1

Corde 1° (MI)

Main droite I M I M I M I M I M I M I M I M I M

Do majeur

Case I



Main gauche 3 0 1 2 0 2 0 1 0 2 0 3 2 0 3

Corde 5° 4° 3° 2° 3° 4° 5°

Main droite I M I M I M I M I M I M I M I M I M